



Feast-table, 2013, Collection of the Artist, Photo by Gabriel Urbánek

アレナ・マチエイカ
Alena Matějka
Journey to the mystic world 神秘的な世界への旅

- Exhibition Title: Alena Matějka: Journey to the mystic world
- Period: Saturday, July 7 – Monday, September 3, 2018
- Venue: Toyama Glass Art Museum 3F Exhibition Room 3
- Hours: 9:30 – 18:00
(until 20:00 on Fridays and Saturdays/Last admission is 30 minutes before closing time)
- *On the first day, the exhibition will open after the opening ceremony.
- Closed: July, 18, August, 8 and August 22, 2018
- Admission: Adult: ¥700 (¥500)/Collage students: ¥500 (¥300)
*Elem/JH/HS: free *Price in brackets for groups of 20 or more.
*Combined tickets with other special exhibitions are available.
*Tickets also allow admission to the Permanent Exhibition.
- Organized by Toyama Glass Art Museum
- Nominal Support by THE KITANIPPON SHIMBUN, THE TOYAMA SHIMBUN,
Kitanihon Broadcasting Co., Ltd., TULIP-TV INC., Toyama Television Broadcasting Co., Ltd.

◆Outline◆

“Alena Matějka: Journey to the mystic world” is the first solo exhibition in Japan by the Czech Republic-based artist Alena Matějka (b. 1966). Matějka set her heart on becoming an artist from an early age. After attending the Secondary School of Glassmaking in Kamenický Šenov she went on to study at the Academy of Arts, Architecture and Design in Prague, developing a wide-ranging practice using such materials as glass and stone. Taking inspiration from chance encounters in her daily life, the natural environment around her, connections with other people, and living myths, cultures and stories, she creates large-scale sculptures and installations. The patterns and materials incorporated in the artworks have been collected by the artist, who conjures a mysterious world in which reality and fantasy seem to merge by combining the narratives and backgrounds of these elements with her own memories, experiences and imaginings. In the presence of her works, our own imaginations expand in various ways as we are drawn into Matějka's peculiar worldview.

◆Artist profile◆

Biography

- 1966 Born in Jindřichův Hradec, Czech Republic
- 1981-85 Secondary School of Glassmaking in Kamenický Šenov, Czech Republic
- 1989-97 M.A., Academy of Arts, Architecture and Design, Prague, Czech Republic
Glass, Department led by Prof. Vladimír Kopecký
- 1995 2-month study in Glasgow School of Art, Ceramic Department, UK
- 2000-05 Ph.D. study at the Academy of Arts, Architecture and Design, Prague, Czech Republic
- 2003 3-month teaching as visiting artist in The University of Sunderland, UK
- 2009 Instructor in Pilchuck Glass School, course “ Aesthetics of Pattern,” USA
- 2011 Before Alena Matějková, from 2011 uses family name Matějka
- 2014 Jury member of Stanislav Libenský Award, Prague, Czech Republic
- 2016 Creative Hands, workshop in Toyama City Institute of Glass Art (TIGA), Toyama, Japan
- 2018 Workshop in Shanghai Polytechnic University, school of Applied Arts Design, Shanghai, China

Awards

- 1996 First Prize - Venezia Aperto Vetro '96, MuseoVetrario, Murano, Venice, Italy
1997 First Prize - Young Glass (Michael Bang Award), Glasmuseet, Ebeltoft, Denmark
2000 František Wolf Annual Award of the Czech Fund of Fine Arts, Czech Republic
2005 Award for dignified representation of the Czech Republic at the World Exhibition EXPO
2005 in Aichi, Japan
2014 Special Jury Award - Coburg Prize for Contemporary Glass, Germany

Solo Exhibitions

- 1994 *Alena Matějková - Sklo*, Central Europe Gallery, Prague, Czech Republic
Stone and Glass, quarry, Kamenický Šenov, Czech Republic
1997 *The Path*, Gorlice, Vyšehrad, Prague, Czech Republic
1998 *Four*, the Church of All Saints, Kamenice nad Lipou, Czech Republic
Investment and Post Bank, (together with Joska Skalník), Prague, Czech Republic
Glass in the Church, Zwiesel, Germany
1999 Gallery SKLO, Atlanta, GA, USA
2000 Gallery ARTRA, Amsterdam, Holland
2001 *Leichtigkeit & Finsternis*, Galerie Ars Temporis, Klagenfurt, Austria
Neue Generation von Böhmischem Glas, Helason Design, Wien, Austria
2002 *Art from the Czech Republic*, Gallery ARTRA, (together with Zdeněk Lhotský)
Amsterdam, the Netherlands
Artlantis, Gorlice, subterranean halls of Vyšehrad, (together with Lars Widenfalk),
Prague, Czech Republic
2004 *Magic Carpets*, National Glass Centre, Sunderland, UK
W/M Sculptures, (together with Lars Widenfalk), Falun, Sweden
The Path / Magic Carpets, Museum of Decorative Arts, Kamenice nad Lipou Chateau,
Vysočina, Czech Republic
2005 *Cloned Máňa*, Galerie Nová Síň, Prague, Czech Republic

Public Collections

- East Bohemian Museum, Pardubice, Czech Republic
Glas Museet, Ebeltoft, Denmark
Landesmuseum, Kassel, Germany
Municipal Museum, Langenfeld, Germany
Museum of Decorative Arts, Prague, Czech Republic
Museum of Decorative Arts in Prague, Kamenice nad Lipou Chateau, Czech Republic

Museum of Contemporary Art, Taipei, Taiwan
Toyama Glass Art Museum, Toyama, Japan
Ernsting Stiftung, Coesfeld, Germany
Institute for International Research in Glass, Sunderland, UK

Public Art

Eide, Norway
Emaar sculpture Collection, Dubai, United Arab Emirates
Falun Sculpture Park, Falun, Sweden
Písek, town park, Czech Republic
Orsa, Sweden
Vlasenice, park Magic Garden, Czech Republic

◆ Related Event ◆

Opening Ceremony

Date: Saturday, July 7, 2018 at 11:00-
Venue: Toyama Glass Art Museum 2F
Charge-free

Welcome Concert

Date: Saturday, July 7, 2018 at 10:15-
Venue: Toyama Glass Art Museum 2F
Programs: *Vltava – Má Vlast* (Smetana, Bedřich), *Humoresques* (Dvořák, Antonín) and
Slavonic Dances op. 72, no.2 (Dvořák, Antonín), etc.
Cast: Yoko Sasajima, Yuriko Ikefuchi, Naoyo Okamoto, Hiroaki Narita, Masashi Yabushita
Charge-free

Artist Talk by Alena Matějka

Date: July 7, 2018 at 14:00-
Venue: Exhibition Room 3 (3F), Toyama Glass Art Museum
Admission: Please present the ticket for today to the exhibition.
Language: Japanese and English *Consecutive interpreting from English into Japanese will be provided.

Gallery Talk by curator

Date: July 14, July 28, August 11 and August 25, 2018 at 15:00-

Venue: Exhibition Room 3 (3F), Toyama Glass Art Museum

Admission: Please present the ticket for today to the exhibition.

Language: Japanese

◆ **Publication** ◆

Exhibition Catalogue “Alena Matějka: Journey to the mystic world”

First Edition: July 7, 2018 (tentative)

Writings: Shibuya Ryoji (Director, Toyama Glass Art Museum), Furusawa Kaori (Curator, Toyama Glass Art Museum)

Design: Kaya Masamitsu (Natural Design Studio)

Language: Japanese and English

Price: ¥1,000 (Including tax)

◆ **Exhibited works** ◆

Photos of the works no.1 to no.7 are available for promotional purpose.

Interested parties should contact Toyama Glass Art Museum upon reading the condition below.

Email: bijutsukan-01@city.toyama.lg.jp

《**Conditions of Use**》

*Photos must be published with the credit and caption given.

*Please refrain from cropping. During layout, please avoid laying type (caption or other) over the photo.

*Please allow museum to verify information at the proof stage.

*Please send a proof (Paper, URL, DVD or CD) to the museum.

Thank you for your understanding and cooperation in advance.



1. *Feast-table*, 2013, Collection of the Artist
 Photo by Gabriel Urbánek



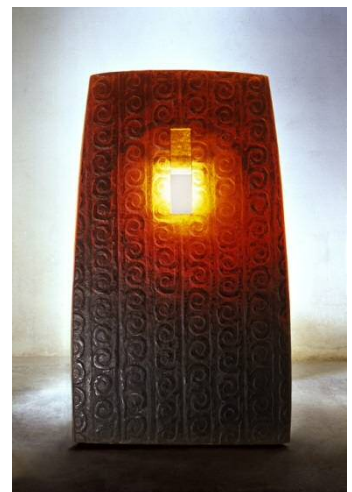
2. *Between Heaven and Earth*, 2015, Collection of the Artist
 Photo by Ondřej Kocourek



3. *David and Goliath*, 2015, Collection of the Artist
 Photo by Gabriel Urbánek



4. *White Rose*, 2017, Collection of the Artist
 Photo by Gabriel Urbánek



5. *Flaming Stele*, 2001, Collection of the Artist
 Photo by Otmar Průša



6. *My Dear; Hunter from Lavondyss*, 2009, Collection of the Artist
 Photo by Gabriel Urbánek



7. *Rock and Roll Shaun the Sheep*, 2018, Collection of the Artist
 Photo by Gabriel Urbánek